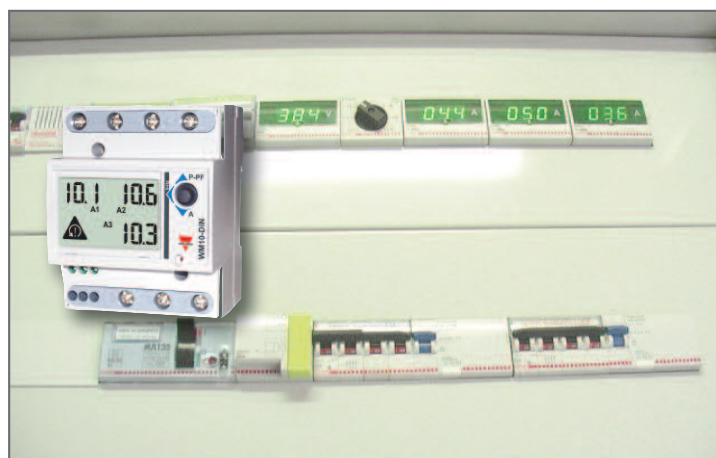


CG APPLICATIONS

CARLO GAVAZZI



Application Note:	November 16th 2007
Market involved :	Light & Medium Industries, Building Automation
Product :	WM10 DIN AV93 X XX X
Customer :	Panel builder, distributors
Subject :	Electrical variables displaying

CUSTOMER ISSUE :

To monitor the main electrical variables relating to the power supply in a switch gear, ordinary analogue or digital panel meters are generally used.

Three ammeters for the single phase measurements with the relevant CT's and one voltmeter combined with a selector (to switch among the single phase to phase or phase to neutral voltages) are required.

This largely used solution is space and time consuming.

OUR SOLUTION:

The installation of a single WM10-DIN allows to monitor a greater number of variables (including frequency, powers and power factors) in a very limited space with less wiring.

The direct connection up to 65 A, that is one of the amazing characteristics of WM10-DIN, allows a further simplification of the wiring process and a further money savings because of the 3 spared CT's.

That is to say that with WM10-DIN it is possible to achieve better performances saving money at the same time.

ACHIEVED BENEFITS:

- WM10-DIN is able to maximise the savings:
 - in terms of space, not only replacing 4 instruments and a selector with just 1 multifunction meter, but also because of its ultra-compact size;
 - in terms of money because of its competitive price and of the cost of the unnecessary external CT's;
 - in terms of time because it doesn't require any programming and it is very easy-to-install.

